



"Local Services, Global Reach"

Forensic Medical Units in a Family Justice Center

Welcome!

While waiting for the presentation to begin, please read the following reminders:

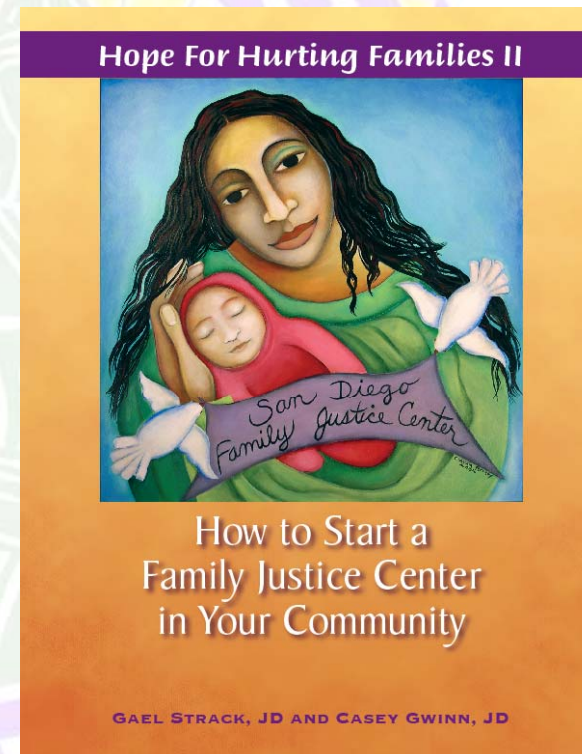
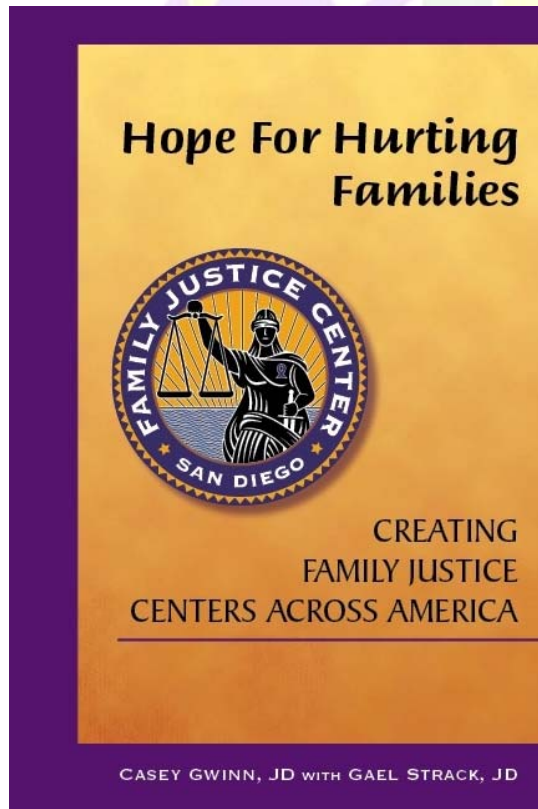
- The presentation will begin promptly at 9 a.m. Pacific Time
- If you are experiencing technical difficulties, email jennifer@nfjca.org
- To LISTEN to the presentation on your phone, dial (616) 883-8055 & enter code 558-649-625
- Attendees will be muted throughout the presentation
- To send questions to the presenter during presentation:
 - Click on “chat” in the toolbar (top right corner)
 - Type your comments & send to presenter
- There will be a Q & A session at the end of the presentation.
- The presentation will be recorded & posted on www.familyjusticecenter.org
- Please complete the evaluation at the end of the presentation. We value your input.

Welcome

- Welcome – Gael Strack, CEO, FJCA
- Special Thanks to Verizon Foundation
- Overview of Today's Webinar
 - 5 minute Overview from Each Center
 - Frequently Asked Questions
 - Questions from the Field
- Resource: C.14 – Launching an FMU
- Introductions of Speakers



Resources



C.14 – Launching a FMU

- Steps in Launching a Center
- Developing Vision, Mission, Goals & Objectives
- Designing the FMU and Name of Facility
- Determining Scope of Services
- Determining Staffing Levels
- Finding the Funds
- Academic Affiliations and Collaboration



San Diego FJC, Forensic Medical Unit

Sponsored by Sharp Hospital

- Launched Feb 2003
- On-site Team:
 - Medical Director
 - SART Nurse
 -  – Office Administrator
 - Volunteers
- Funding
 - Grants
 - In-kind donations
- Scope of Services
 - Domestic Violence
 - Elder Abuse
 - Child Wellness Checks
 - Residency Program
 - International Internship
 - Forensic Internship
 - Volunteer Nurses
 - Research

FMU Facilities



@ 2006 San Diego Family Justice
Center Foundation



FJCs with FMUs

- CA: San Diego & Alameda County FJC
- TX: Bexar County FJC – located at a Medical Facility
- Boise & Nampa, Idaho
- FJC of St. Joseph's County - Indiana
- Boston FJC
- Croydon FJC, England
- Waterloo FVP, Canada





Alameda County FJC

- Nadia Lockyer
- Nadia.lockyer@acgov.org



Grand Opening (8/31/2005)

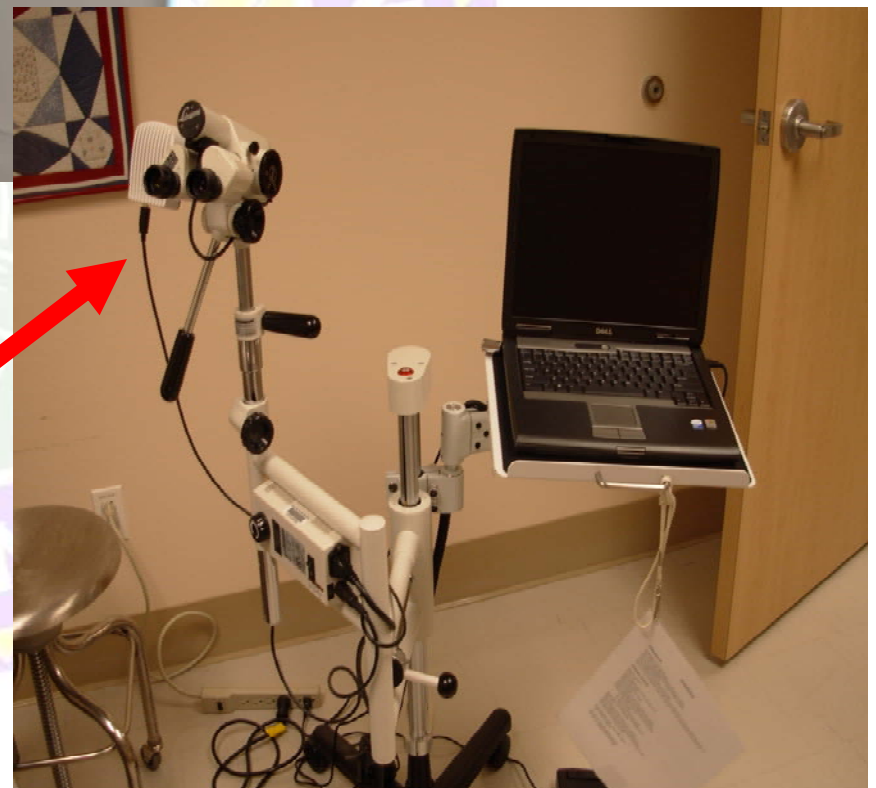




Color: Forensic Blue

The exam chair

The Colposcope





Alameda County Family Justice Center

- ACFJC opened: August 2005/FMUs Same time
- Overview of FMU:
 - On-site:
 - Alameda County Public Health Department (1st Floor)
 - Team: Project Director, Nurses (2), Receptionist
 - Scope of Services:
 - » Immunizations, SDT Screenings, after care, basic followup.
 - » Child/Youth Wellness Checks
 - » Referrals to other medical and social services onsite.
 - » Purple Ribbon: assist DV survivors with enrollment into Medi-Cal/public insurance programs and provide referrals to dental, mental health, and substance abuse programs.
 - » Care to teen victims of sexual abuse, exploitation and DV.
 - Forensic Exam Room, 2nd floor (Photos):
 - Hillary Larkin, Physician Assistant, APMC Highland Hospital
ER: Medical Director, Alameda County Sexual Assault Response Team





Alameda County Family Justice Center

- Off-Site/Partnerships with SART/hospitals:
 - Goal:
 - To regionalize the forensic exams so victims can stay in their own areas for response and treatment.
 - VRS allows communication with advocates (BAWAR & FVLC) and Navigators for linkages to ACFJC services.
 - Video Relay Systems in 4 SART Centers:
 - Center for Child Protection, 0-12
 - Highland Hospital SART,
 - Valley Care SART
 - Washington Hospital SART
- Funding:
 - Public Health Funding & Grants
- Number of Clients Served:
 - Pubic Health: 1, 203
 - SARTs: Approx. 600 per year (250 kids and 350 adults)



Kevin McTeague, Boise



- Kevin McTeague,
Executive Director
- FACES
- 417 S. 6th St.
- Boise, Idaho 83702
- Phone: 208-577-4411
- Kmcteague@adaweb.net
- www.adacountyfaces.com



FACES

Family Advocacy Center & Education Services



Overview of the FMU

- Date FJC opened
- Date FMU Opened
- Overview of FMU
- List services provided in the FMU
- Partnerships with SART or hospitals?
- Number of clients served
- Photo of FMU



Rebecca Lovelace, Nampa

- Nampa Family Justice Center. 1305 Third St. South, Nampa, Idaho 83651. Phone- 208.475.5700

- www.nampafamilyjusticecenter.org



- Rebecca Lovelace, Executive Director
208.475.5700 or
lovelacer@cityofnampa.us



Nampa Family Justice Center Launched November 30, 2005



- Located at 1305 Third St. South, Nampa, Idaho 83651







Overview of the Nampa FMU

- FJC Opening Date: November 30, 2005
- FMU Opening Date: November 30, 2007 (combined with 2 yr. anniversary celebration)
- Currently providing physical exams to children entering foster care in Region III (Children's Advocacy Center service)
- Awaiting contract signatures with Mercy Medical Center personnel to begin adult sexual assault exams (SART)
- Awaiting contract signatures with Idaho Department of Health and Welfare to begin "wellness exams on child victims of sexual abuse coming into the FJC for forensic interviews (Children's Advocacy Center service)
- Entering into partnership with Mercy Medical Center for the SART exams; Idaho Department of Health and Welfare and Boise State University for the wellness exam as part of forensic interviews.
- The Ellen Marie Pediatric Unit has provided forensic interviews to 63 children of alleged child sexual abuse and 45 physical exams to children entering foster care since the opening of the unit.



Frequently Asked Questions



Staffing

- Who is providing services? RN? Doctor?
- How do you staff it?
- MOU?



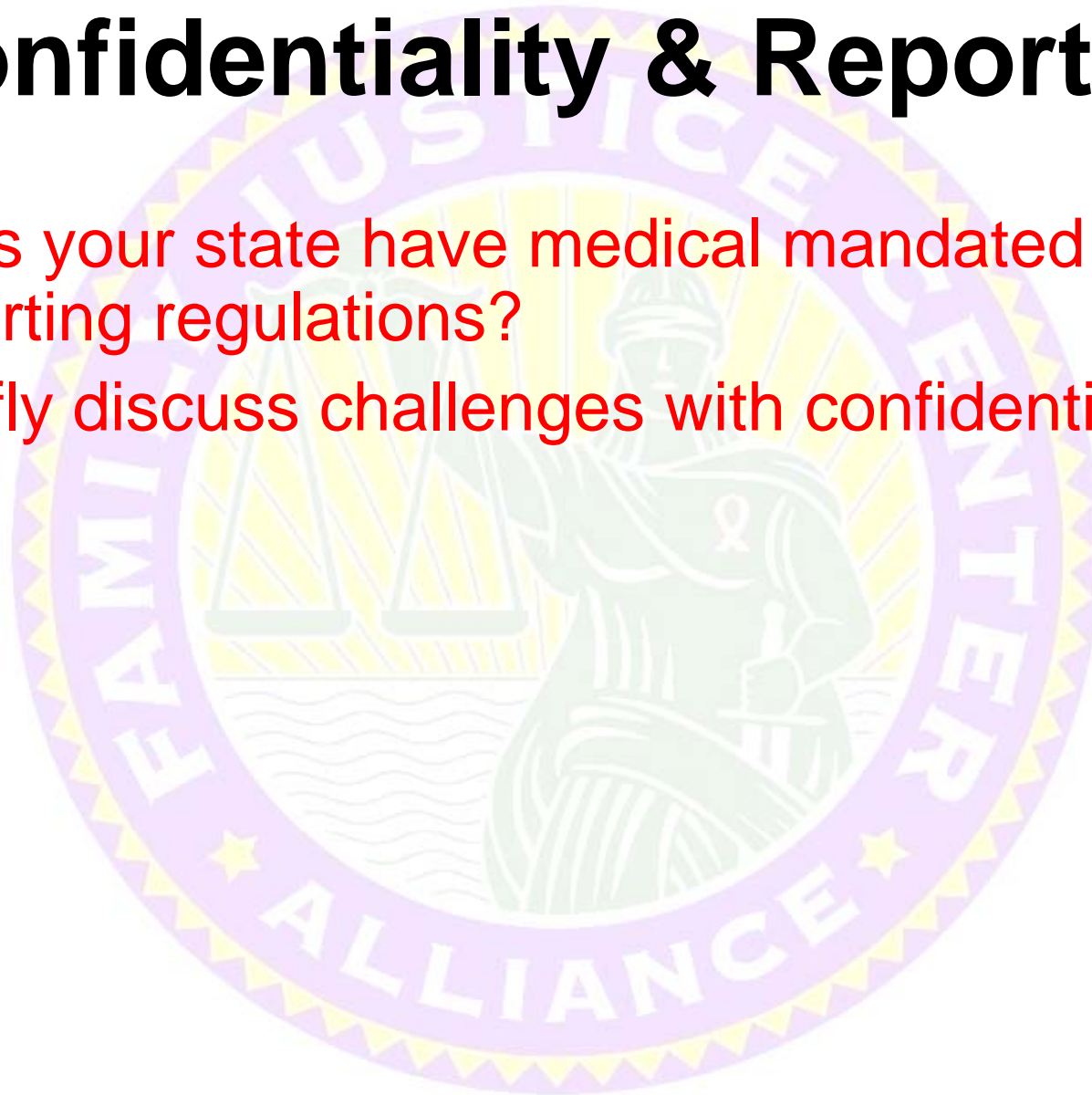
Funding

- How is the FMU funded?
- Was equipment donated?
- How do you pay for staff or services?



Confidentiality & Reporting

- Does your state have medical mandated reporting regulations?
- Briefly discuss challenges with confidentiality?



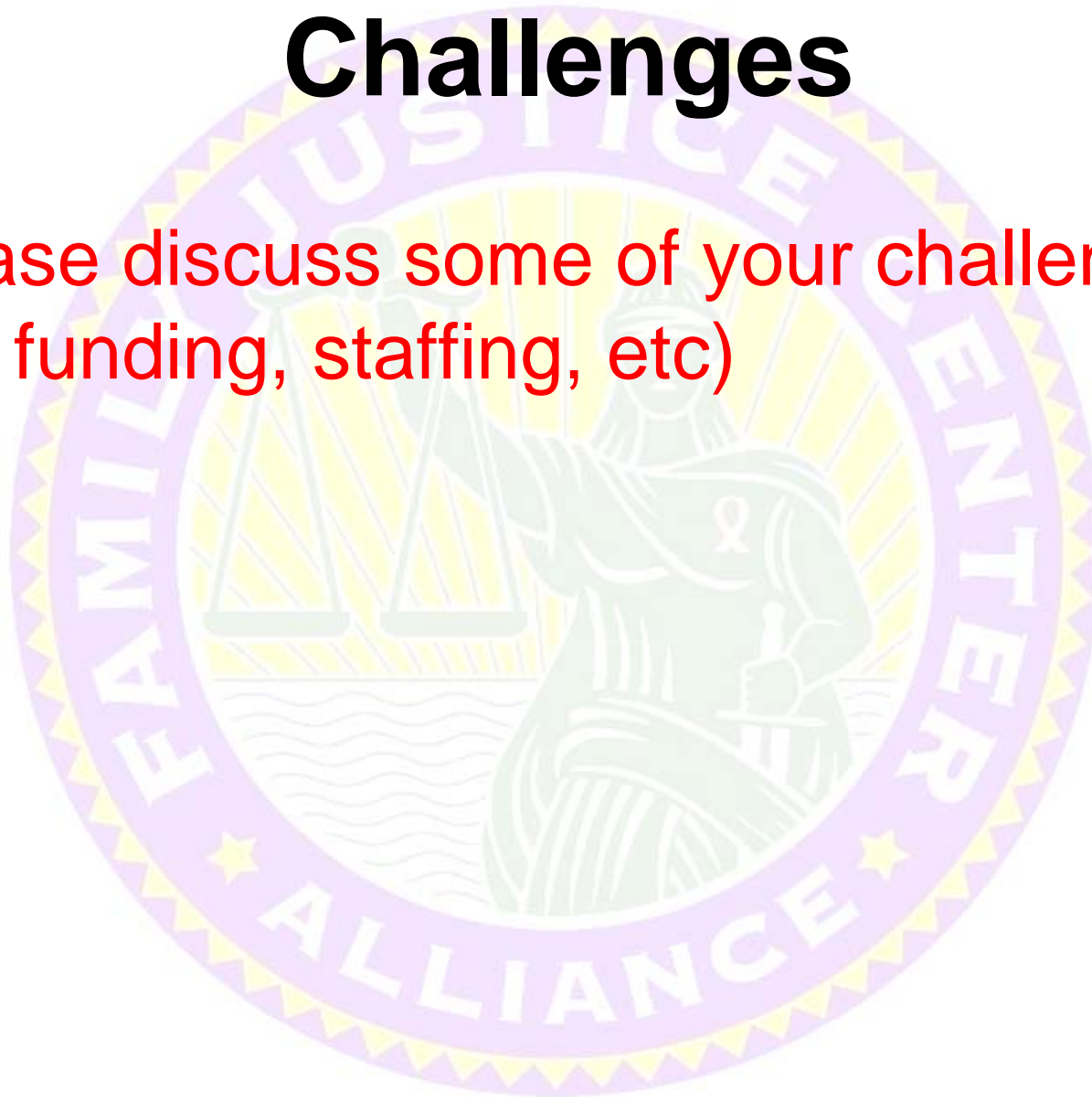
Benefits

- Please tell us about a few success stories or quotes from clients
- Why is important to have a FMU?



Challenges

- Please discuss some of your challenges (i.e. funding, staffing, etc)



Questions from Memphis, TN

- How many cases are referred to the FMU?
- Which cases are referred?
- Which cases have proven to be the most beneficial for prosecution?
- How are the exams from the FMU used for prosecution, especially in evidence based prosecutions without the victim?



Excellent Resource

The Physician's Guide To Intimate Partner Violence And Abuse

A Reference for all Health Care Professionals

**How to Ask
the Right Questions
and Recognize Abuse . . .
Another Way to Save a Life**

Patricia R. Salber, MD and Ellen Taliaferro, MD

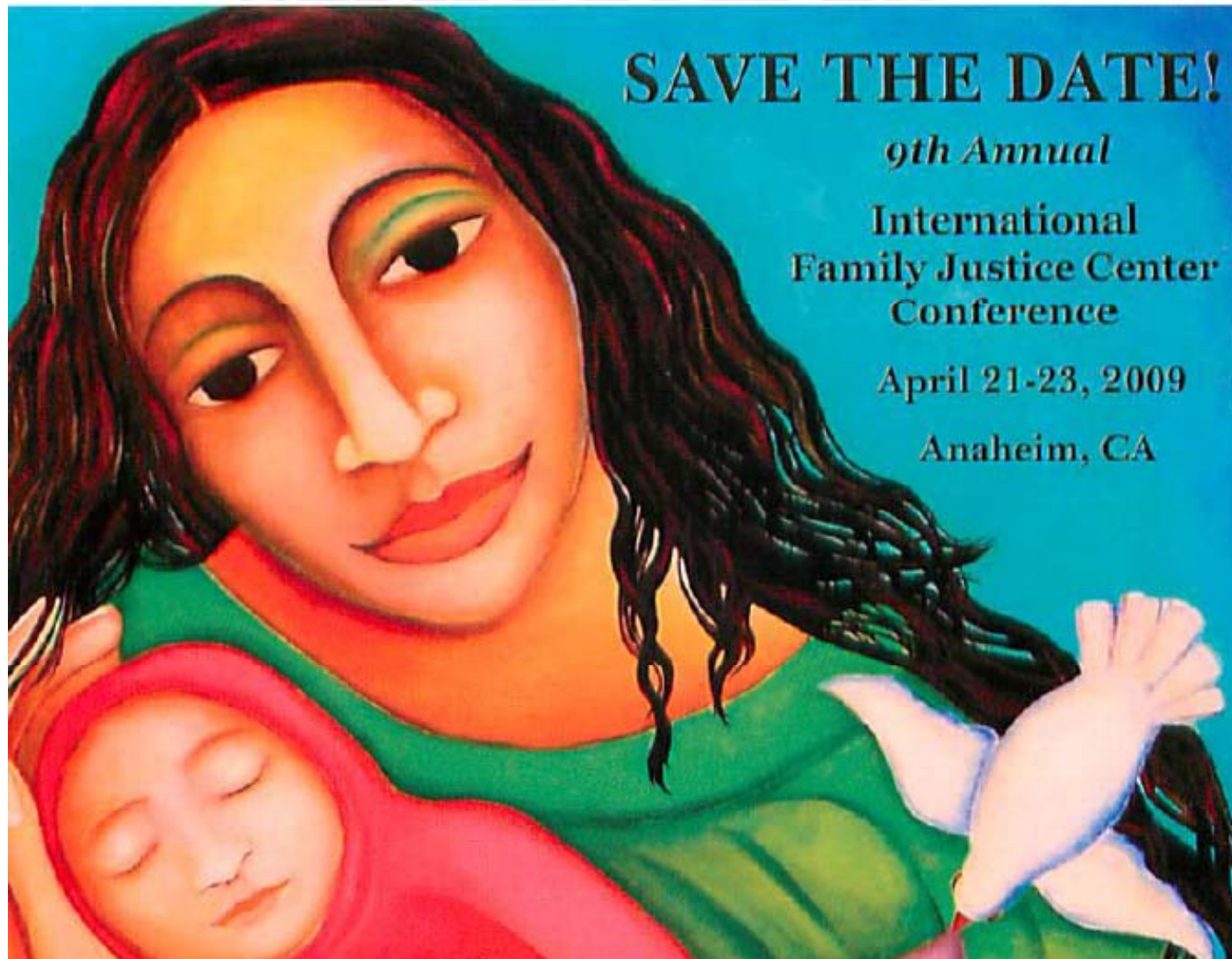
With contributions by:

Robert F. Anda, MD
Larry Cohen, MSW
Rachel Davis, MSW
Vincent J. Felitti, MD
Corinne M. Graffunder, MPH
Brigid McCaw, MD
Gael Strack, JD

- What do we do when the victim Answers Yes
 - Dr. Taliaferro
- Laws related to DV
 - Gael Strack, JD
- How to prepare the optimal response
 - Dr. McCaw
- Volcanopress.com



Attend our Next Conference



The FJC Alliance Team



Casey Gwinn, JD



Gael Strack, JD



Judi Adams, LMFT



Ret. Lt. Jim Barker



Jennifer Bodine



Tim Campen, JD



Sgt. Robert Keetch



Brenda Lugo



Diane McGrogan,
LCSW



Thank you – The End!

